



Community Dental Support Programme



政府資助計劃
Government-funded programme

Background



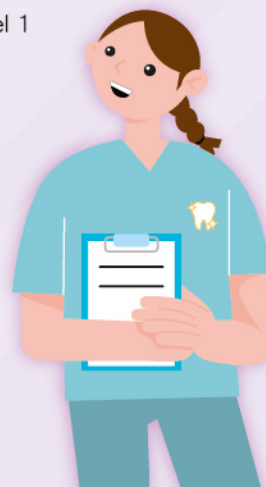
To promote early identification and timely intervention of dental diseases among the underprivileged groups with financial difficulties through collaborating with non-governmental organisations (NGOs) to provide subsidised dental services. Dental filling services will be provided when dentists consider appropriate to encourage tooth retention.

Target Beneficiaries



Service users must be a holder of a Hong Kong identity card, be enrolled in the Electronic Health Record Sharing System (eHealth), and be a current beneficiary or recipient of any of the following measures:

- Old Age Living Allowance (OALA) of the Social Welfare Department (SWD);
- Community Care Service Voucher Scheme for the Elderly (Level 2 of co-payment category) of the SWD;
- Integrated Home Care Services (Frail Cases) (IHCS (Frail Cases)), or Enhanced Home and Community Care Services (EHCCS) or Home Support Services (HSS) (Level 1 or Level 2 fee charge or co-payment category) of the SWD; or
- Patients of Hospital Authority (HA) who have been provided Medical Fee Waiver (full waiving and partial waiving) of the HA.



Scope of Subsidised Services



After assessed by the attending registered dentist from the NGOs appointed by the Government, the following subsidised dental services will be provided to participant within 180 days if considered suitable:

- Oral health assessment
- Medication for dental pain relief (when necessary)
- X-ray examination
- Dental filling or extraction with each tooth counted as a “Teeth Filling/ Extraction Quota”, up to a maximum of three “Teeth Filling/ Extraction Quotas” will be provided

Eligible Persons May Enrol Now



Select and contact the NGO dental clinic of your choice to make an appointment in advance.



Before the appointment:

Complete the Application Form and complete registration in eHealth.

Forms are available on the CDSP website or can be obtained directly from the chosen NGO dental clinic.

On the day of appointment:

Bring the completed form, HKID card and **original copies** of supporting documents as stipulated in the application form to the NGO dental clinic to receive services.

Administration Fee



Participants shall pay the administration fee directly to the NGO for each “Teeth Filling/Extraction Quota”. The administration fee for each “Teeth Filling/Extraction Quota” is \$50.