

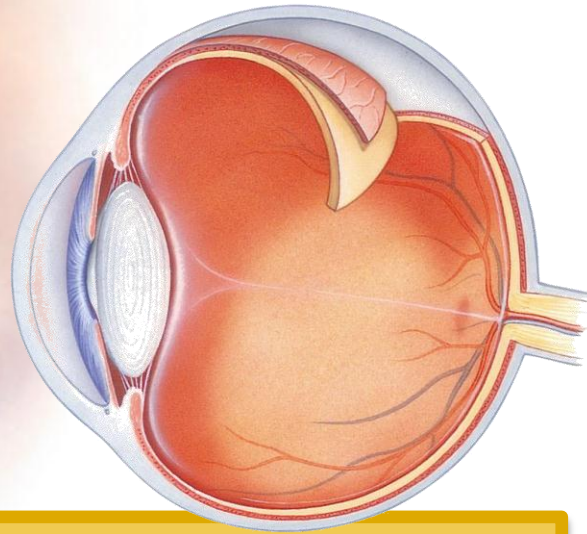


香港防癆心臟及胸病協會  
The Hong Kong Tuberculosis, Chest and Heart Diseases Association

## Seminars on

# Practical Eye Diseases Management

## 「實用眼疾護理」 for Nurses



**Date** : 5<sup>th</sup> & 19<sup>th</sup> July 2014 (Saturdays)

**Time** : 9:00am to 11:15am (Module 1)  
9:00am to 12:15pm (Module 2)

**Venue** : Lecture Theatre, LG 1, Ruttonjee Hospital,  
266 Queen's Road East, Wan Chai, Hong Kong

**CNE** : 2 points (Module 1), 3 points (Module 2)  
(to be confirmed)

	Date	Topic	Speaker
1	5 <sup>th</sup> July 2014 9:00am to 11:15am	Eye care and Eye conditions cannot be missed by Health Care Professional	Dr. PONG Chiu Fai, Jeffrey Specialist in Ophthalmology Asia Eye Institute
2	19 <sup>th</sup> July 2014 9:00am to 12:15pm	Update on Cataract Management	Dr. Keith CHAN, Consultant, Cataract Centre, Grantham Hospital
		Roles of the Nurse in Cataract Surgeries	Ms. LAW See Man, Advanced Practice Nurse, Cataract Centre, Grantham Hospital



## Seminars on “Practical Eye Diseases Management” for Nurses

### Objectives:

- 1.To strengthen, update and develop knowledge of nurse professionals on the topic of “Eye Diseases Management”.
- 2.To enhance their skills and technique in daily practice.

### Targets:

Nurses from all aspects

### Contents and speakers:

	Date	Topic	Speaker
1	5 <sup>th</sup> July 2014 9:00am to 11:15am	Eye care and Eye conditions cannot be missed by Health Care Professional	Dr. PONG Chiu Fai, Jeffrey Specialist in Ophthalmology Asia Eye Institute
2	19 <sup>th</sup> July 2014 9:00am to 12:15pm	Update on Cataract Management	Dr. Keith CHAN, Consultant, Cataract Centre, Grantham Hospital
		Roles of the Nurse in Cataract Surgeries	Ms. LAW See Man, Advanced Practice Nurse, Cataract Centre, Grantham Hospital

### Mode of delivery

Lecture & discussion session. The teaching medium will be mainly in Cantonese supplemented by English as necessary.

### Venue

Lecture will be held at: **Lecture Theatre, LG 1, Ruttonjee Hospital, 266 Queen’s Road East, Wan Chai, HK. (*Parking space is NOT available*)**

### CNE points:

Participants can be accredited **2 points (Module 1) and 3 points (Module 2) of Continuing Nursing Education** (to be confirmed)

### Course Fee

\$400 (non-member of our Centre) or \$300 (member of our Centre) for Full course **or**  
\$200 (non-member of our Centre) or \$150 (member of our Centre) for each module

### Registration Method

Please mail completed form with payment (**cheque only**) to: **The Hong Kong Tuberculosis, Chest and Heart Diseases Association, 266 Queen’s Road East, Wan Chai, Hong Kong.** Registration could not be cancelled or modified after confirmation.  
(Cheque payable to “The Hong Kong Tuberculosis, Chest and Heart Diseases Association”)

### Number of Participants

Seats are limited, first come first served.

### Note

- 1.Training materials will be distributed on each module if available.
- 2.Certificate will be awarded to participants who have attended all 2 modules successfully.
- 3.For those who are not able to attend full course, letter of attendance will be awarded at the end of each module.

**Seminars on “Practical Eye Diseases Management” for Nurses**

**Registration Form**

Please ✓ your choice

You can choose 1 or more than 1 module

	Module 1 (5 <sup>th</sup> July 2014)	Module 2 (19 <sup>th</sup> July 2014)
<i>Non-member of our Centre (\$200 per each module)</i>	<input type="checkbox"/>	<input type="checkbox"/>
<i>Member of our Centre (\$150 per each module)</i>	<input type="checkbox"/>	<input type="checkbox"/>

**Personal Particulars**

Title:  Prof.  Dr.  Mr.  Mrs.  Ms.  Miss  Others

Name: \_\_\_\_\_ (Chi) \_\_\_\_\_ (Eng)

Department / Post: \_\_\_\_\_

Institution \_\_\_\_\_

Telephone: \_\_\_\_\_ Mobile: \_\_\_\_\_ Fax: \_\_\_\_\_

**{Please fill in the fax number / email address for sending the confirmation letter}**

Email Address: \_\_\_\_\_

Mailing Address: \_\_\_\_\_

Cheque : \_\_\_\_\_ (Bank) \_\_\_\_\_ (Cheque Number)

**[Cheque payable to: “The Hong Kong Tuberculosis, Chest and Heart Diseases Association]**

**[Please put down your name and contact number at the back of the cheque]**